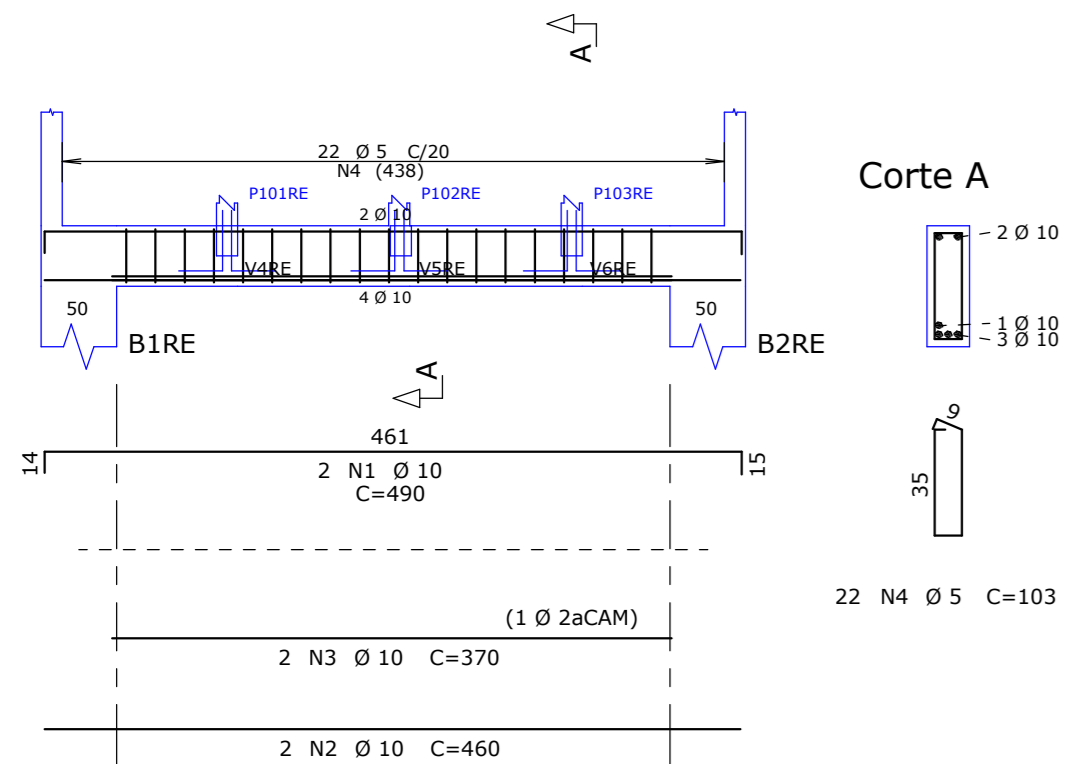
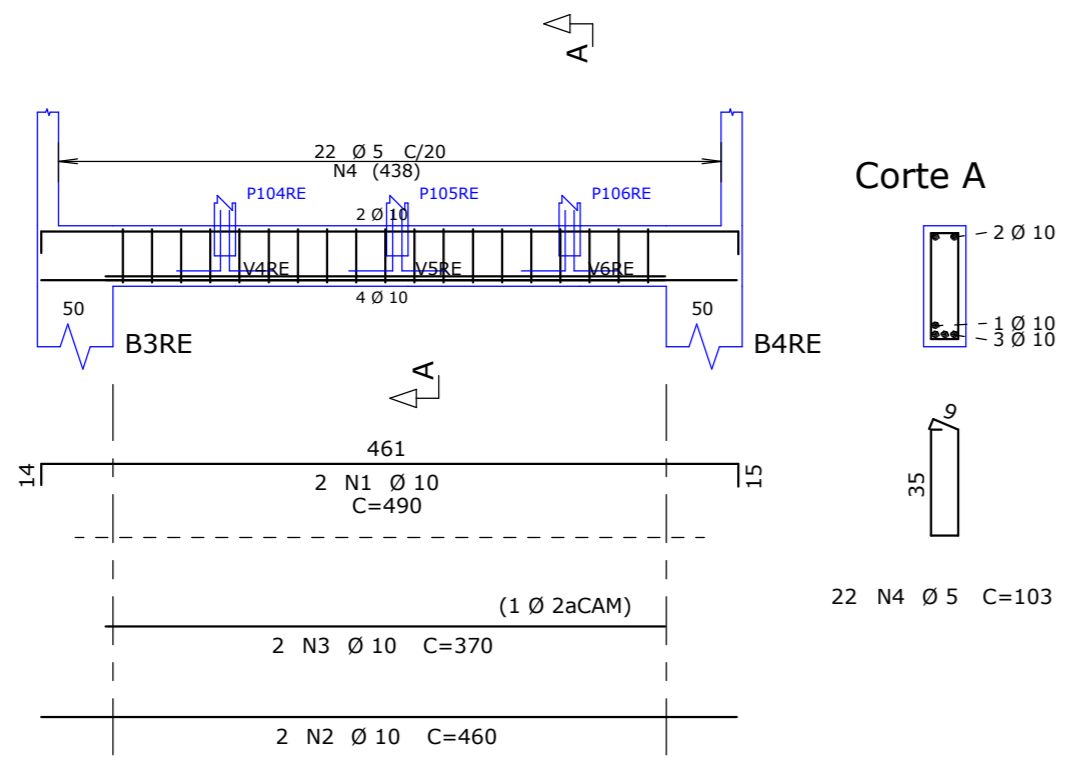


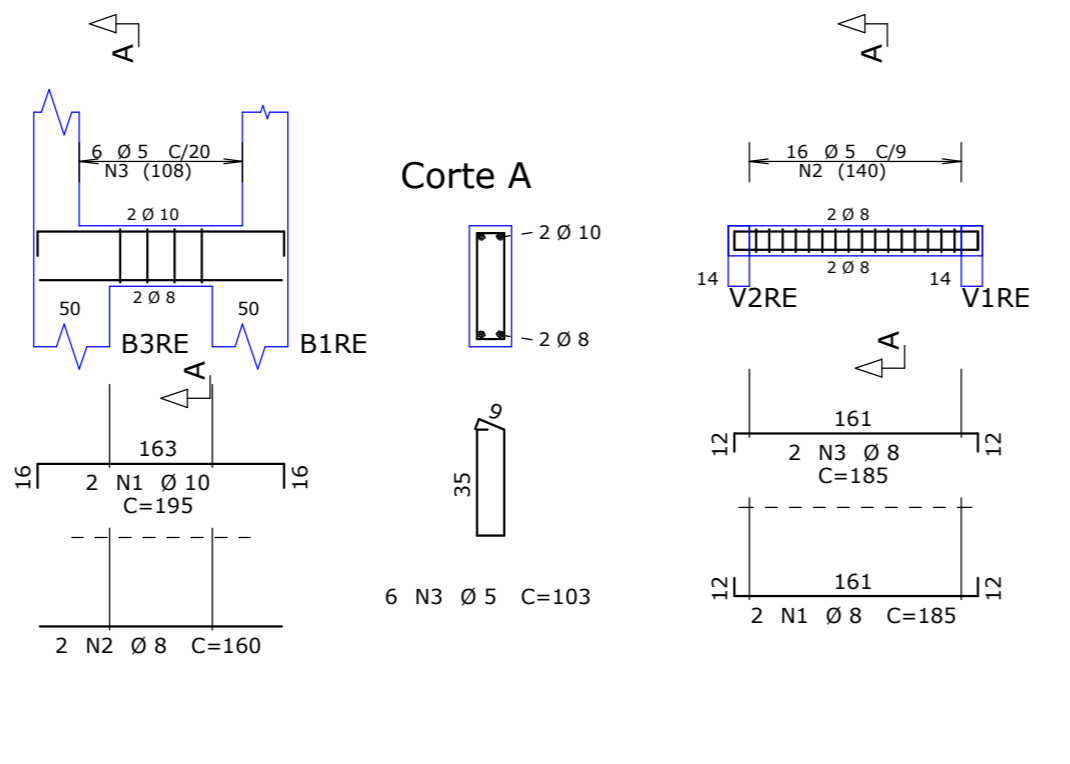
V1RE 14X40



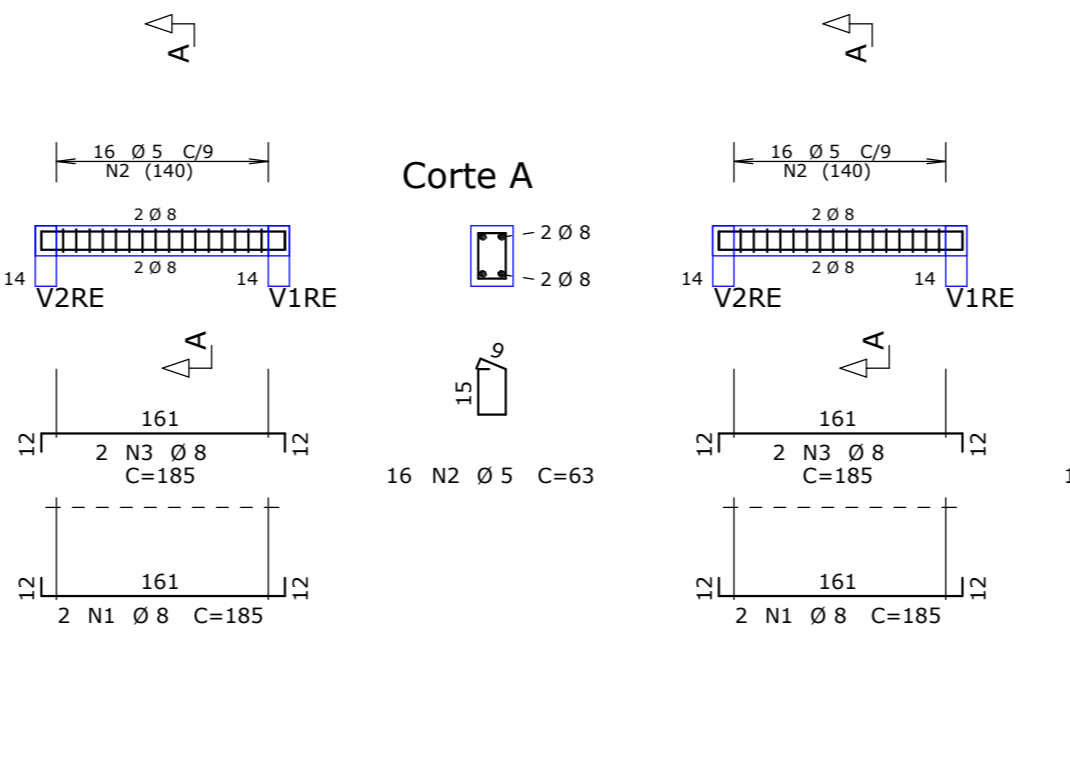
V2RE 14X40



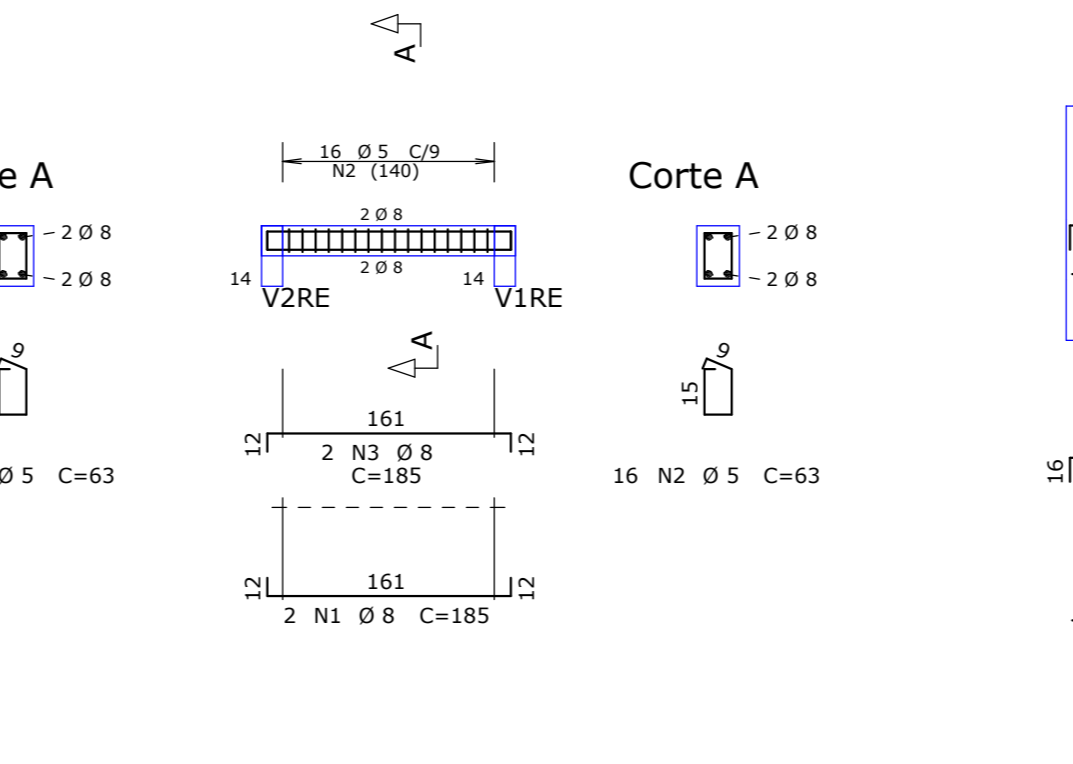
V3RE 14X40



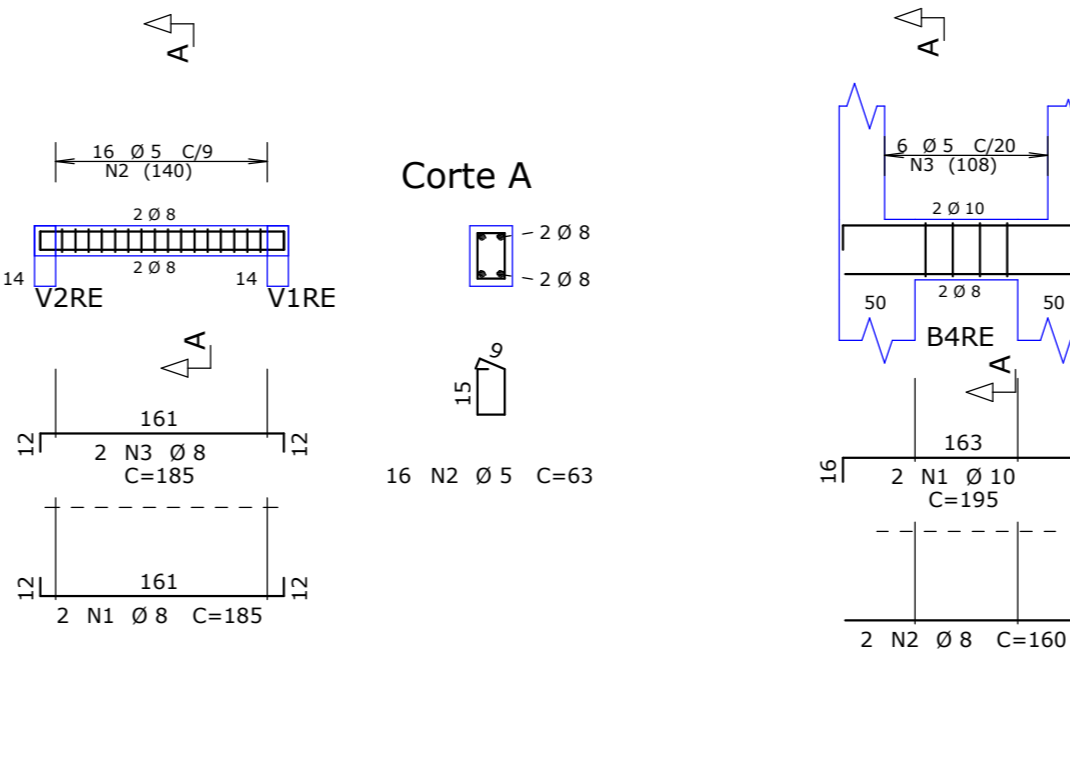
V4RE 14X20



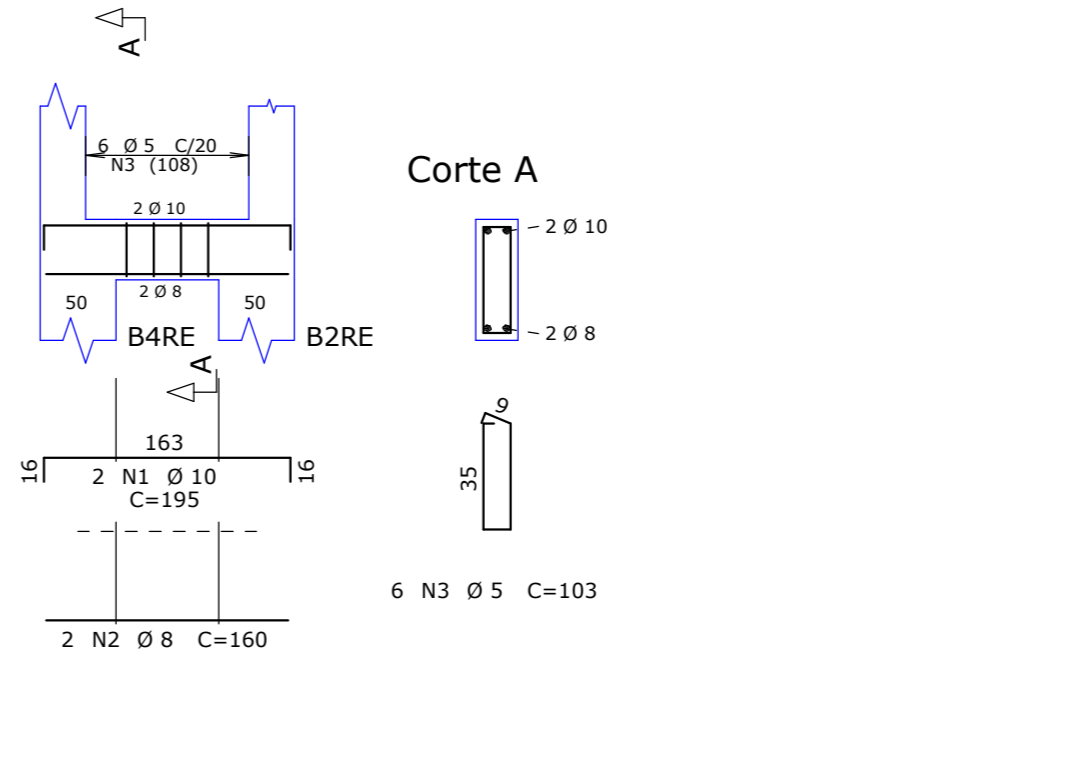
V5RE 14X20



V6RE 14X20



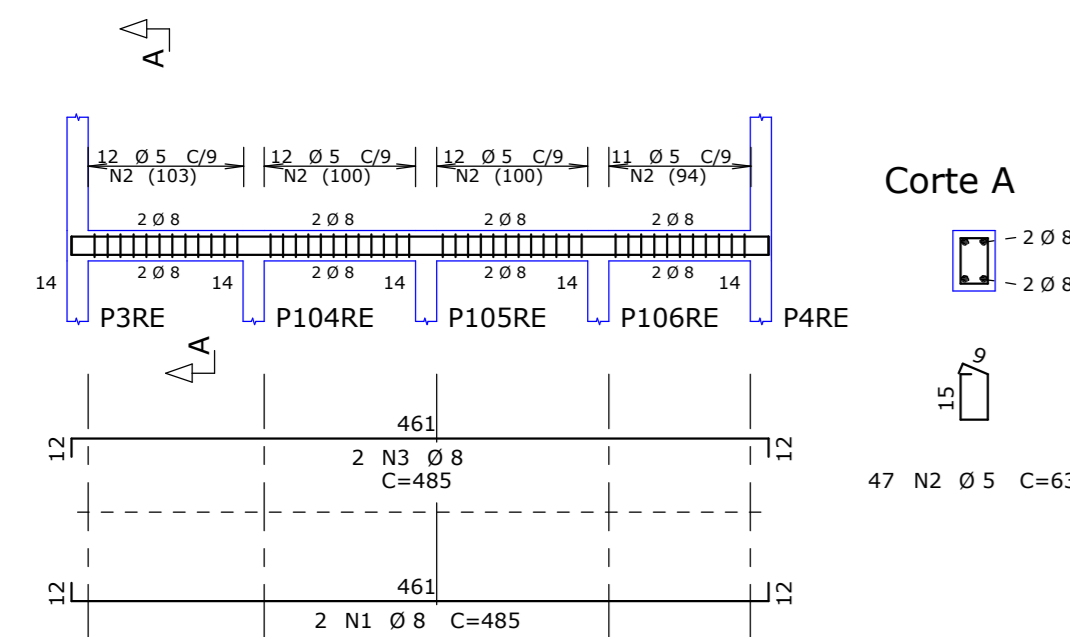
V7RE 14X40



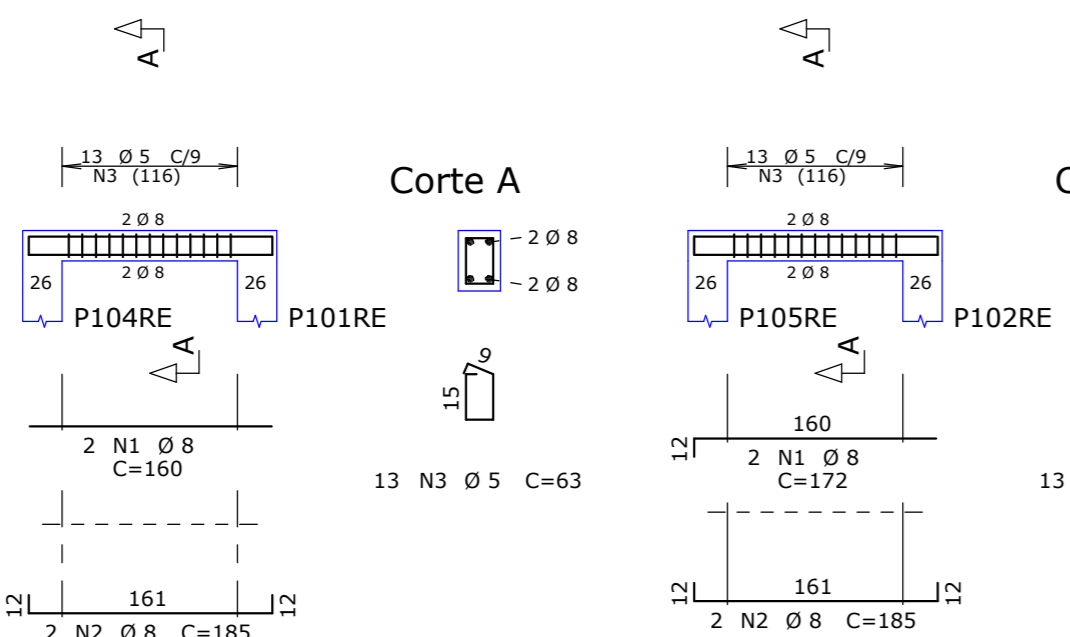
ACO	POS	BIT	QUANT	COMPRIMENTO	UNIT	TOTAL
		mm		cm		
V1RE						
50A	1	10	2	490	980	
50A	2	10	2	460	920	
50A	3	10	2	370	740	
60B	4	5	22	103	2266	
V2RE						
50A	1	10	2	490	980	
50A	2	10	2	460	920	
50A	3	10	2	370	740	
60B	4	5	22	103	2266	
V3RE						
50A	1	10	2	195	390	
50A	2	8	2	160	320	
50A	3	10	2	185	370	
60B	4	5	16	63	1008	
50A	3	8	2	185	370	
V4RE						
50A	1	8	2	185	370	
60B	2	5	16	63	1008	
50A	3	8	2	185	370	
V5RE						
50A	1	8	2	185	370	
60B	2	5	16	63	1008	
50A	3	8	2	185	370	
V6RE						
50A	1	8	2	185	370	
60B	2	5	16	63	1008	
50A	3	8	2	185	370	
V7RE						
50A	1	10	2	195	390	
50A	2	8	2	160	320	
60B	3	5	6	103	618	

RESUMO DE AÇO				PESO
ACO	BIT	COMPR		
	mm	m		kgf
60B	5	88		14
50A	8	29		11
50A	10	61		37
Peso Total	60B =			14 kgf
Peso Total	50A =			49 kgf

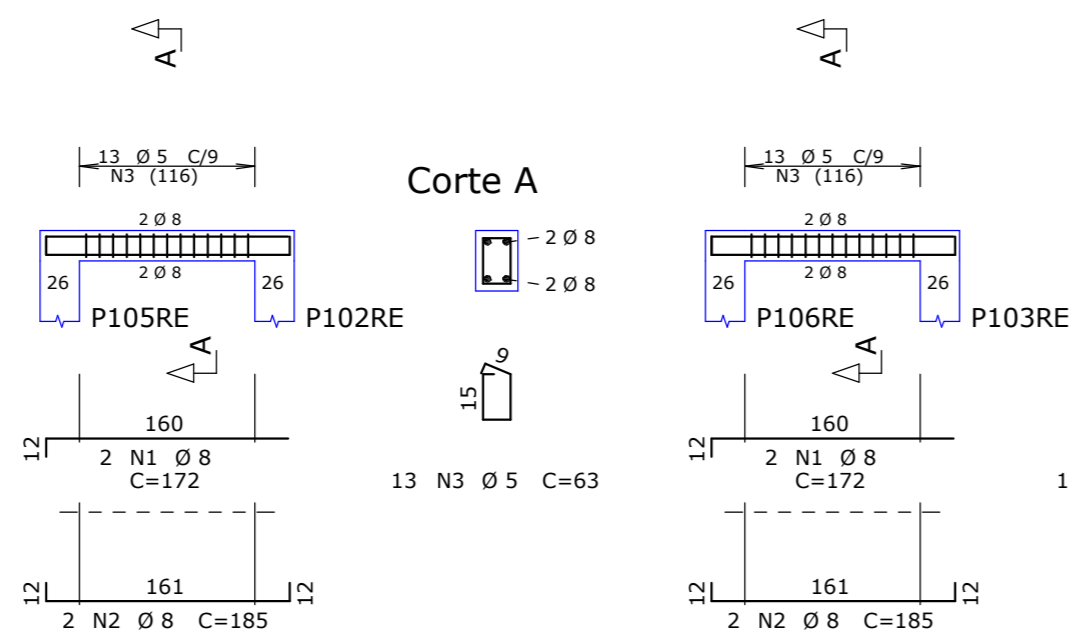
V50RE 14X20



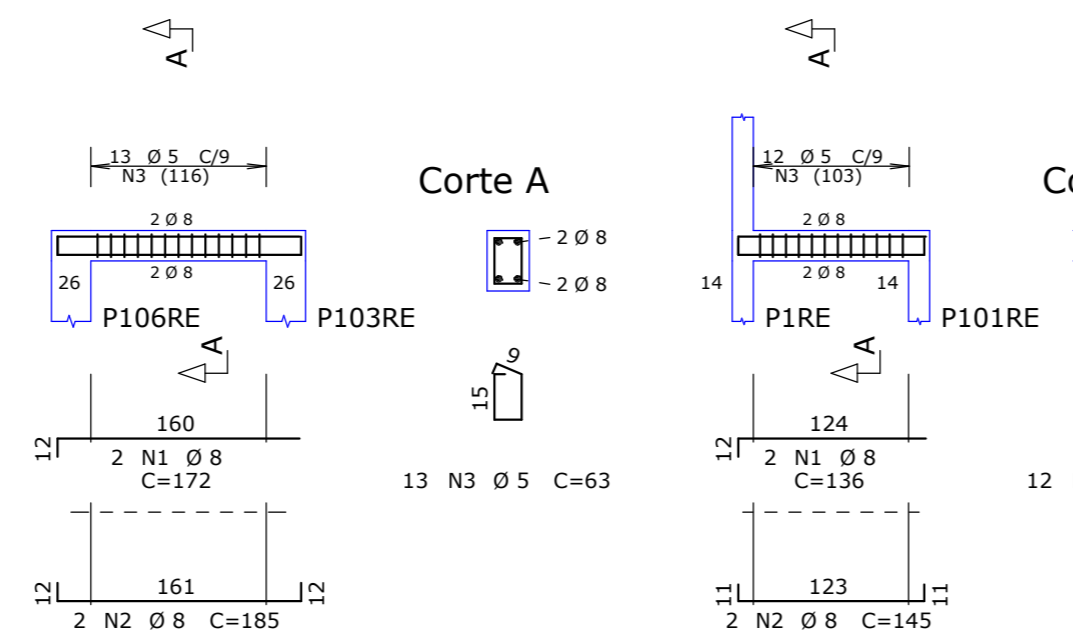
V51RE 14X20



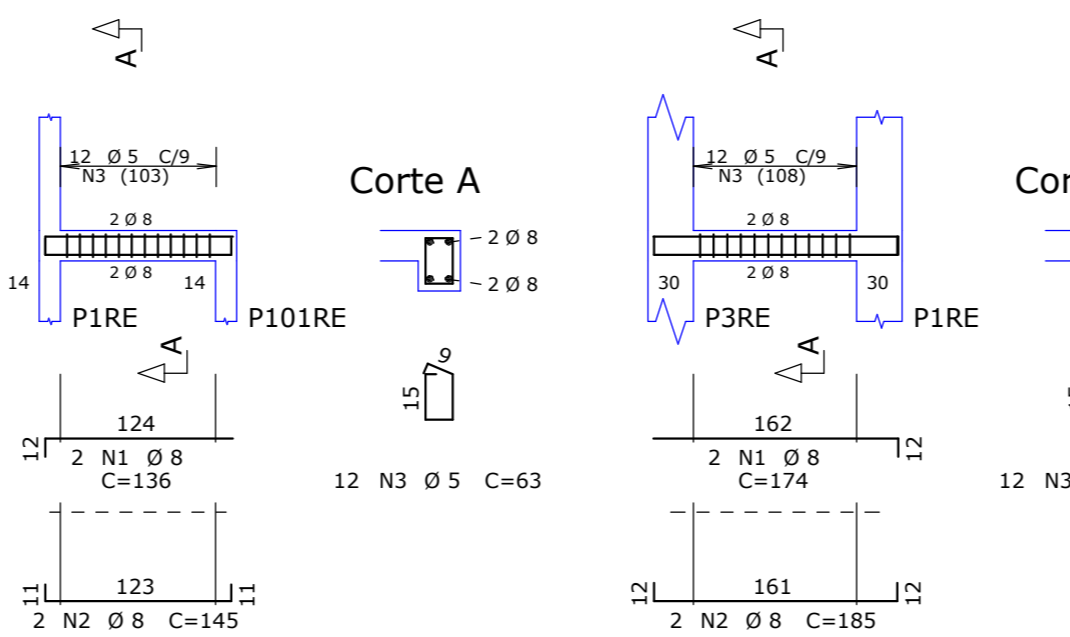
V52RE 14X20



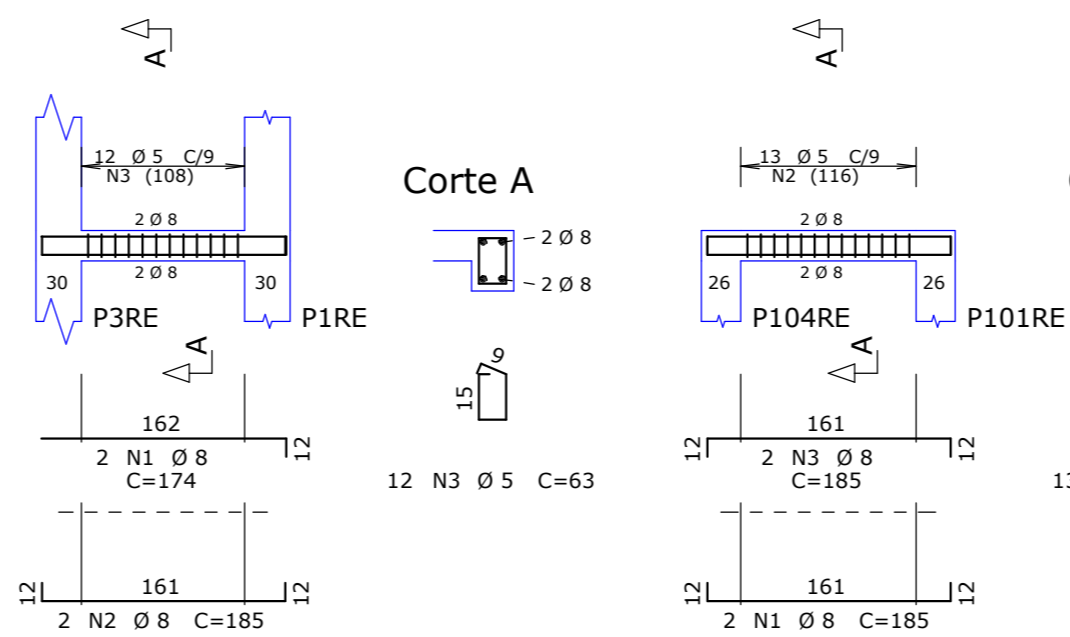
V53RE 14X20



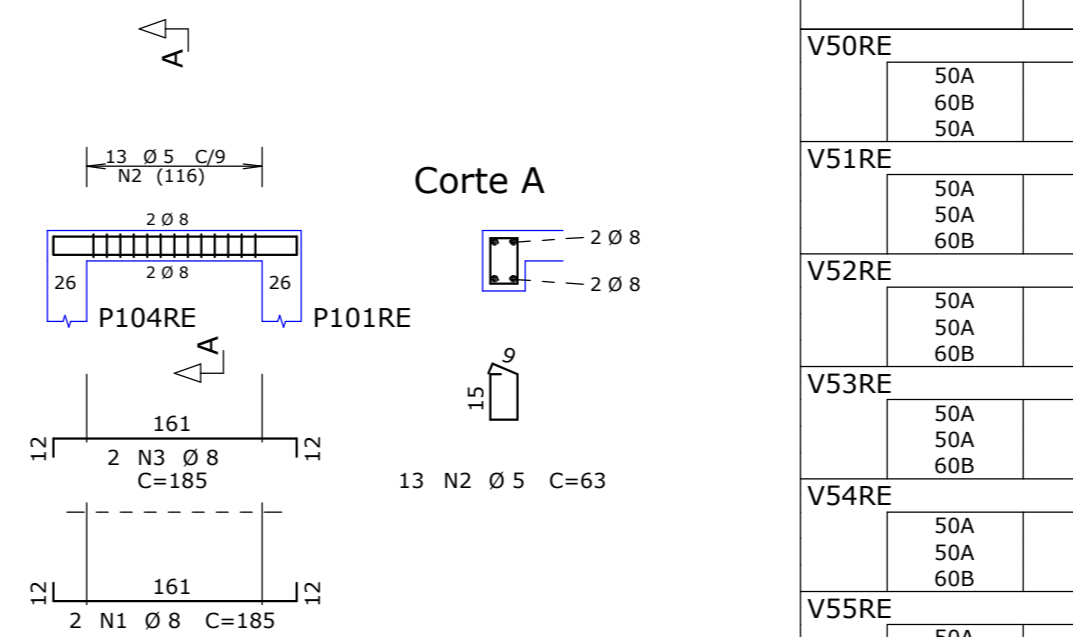
V54RE 14X20



V55RE 14X20



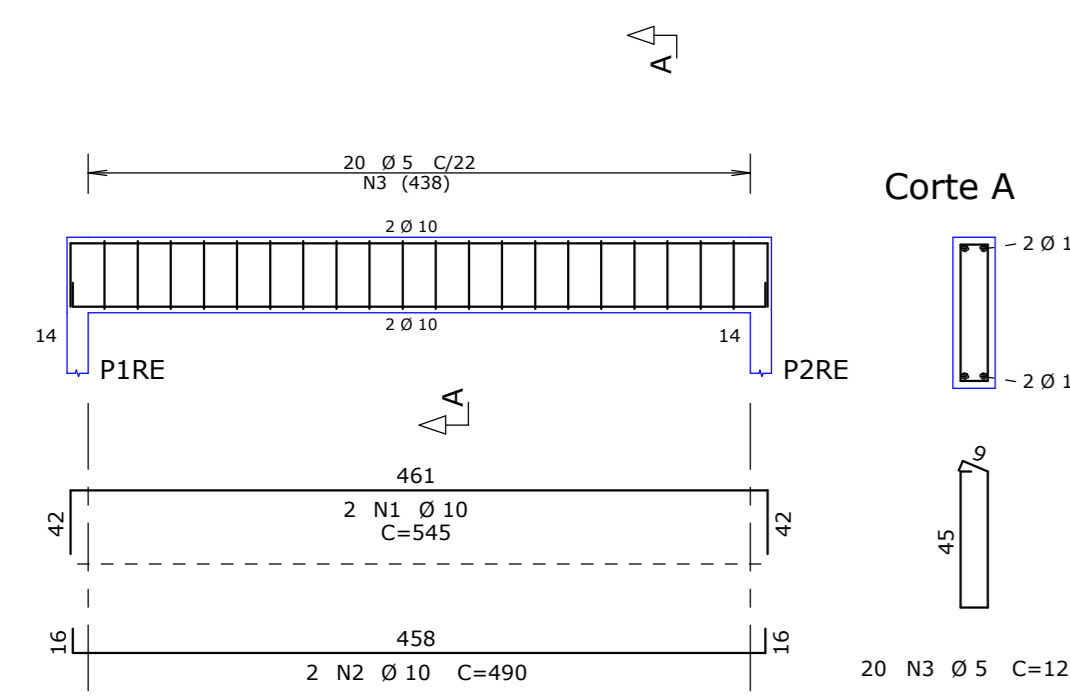
V56RE 14X20



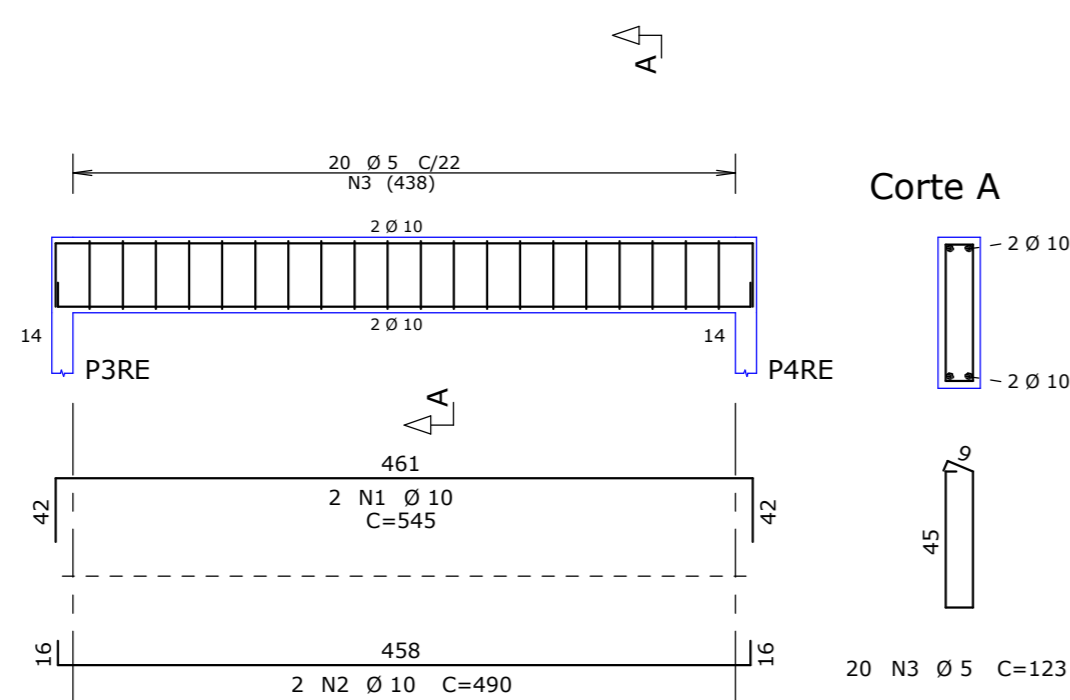
ACO	POS	BIT	QUANT	COMPRIMENTO	UNIT	TOTAL
		mm		cm		
V50RE						
50A	1	8	2	485	970	
60B	2	5	47	63	2961	
50A	3	8	2	485	970	
V51RE						
50A	1	8	2	160	320	
50A	2	8	2	185	370	
60B	3	5	13	63	819	
V52RE						
50A	1	8	2	172	344	
50A	2	8	2	185	370	
60B	3	5	13	63	819	
V53RE						
50A	1	8	2	172	344	
50A	2	8	2	185	370	
60B	3	5	13	63	819	
V54RE						
50A	1	8	2	136	272	
50A	2	8	2	145	290	
60B	3	5	12	63	756	
V55RE						
50A	1	8	2	174	348	
50A	2	8	2	185	370	
60B	3	5	12	63	756	
V56RE						
50A	1	8	2	185	370	
60B	2	5	13	63	819	
50A	3	8	2	185	370	

RESUMO DE AÇO				PESO
ACO	BIT	COMPR		
	mm	m		kgf
60B	5	77		12
50A	8	61		24
Peso Total	60B =			12 kgf
Peso Total	50A =			24 kgf

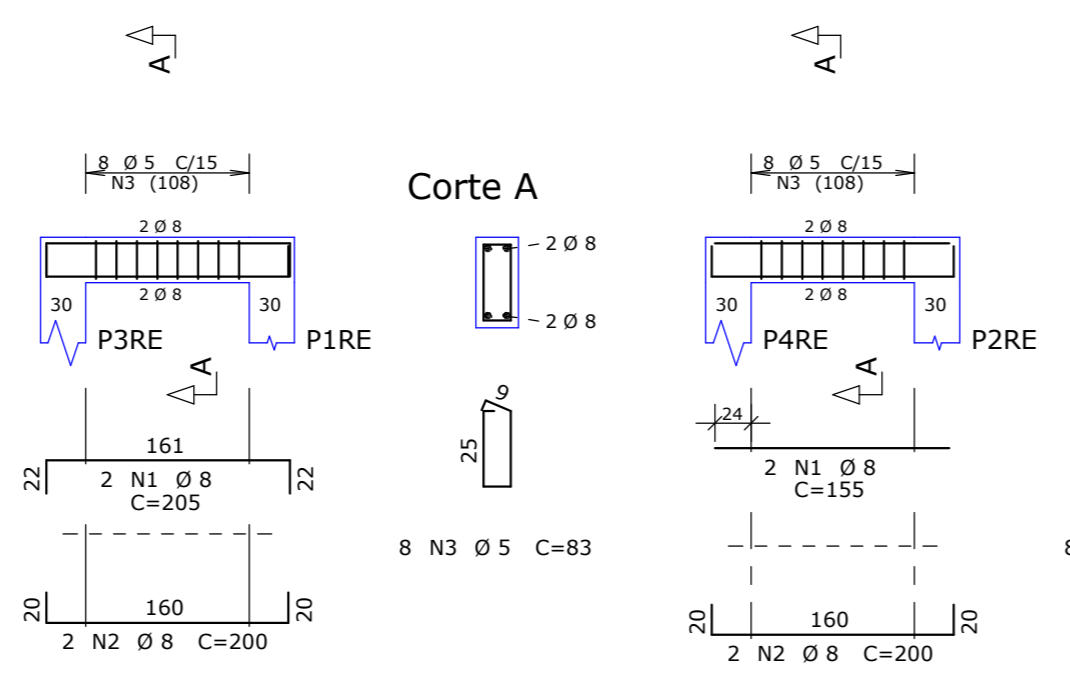
V101RE 14X50



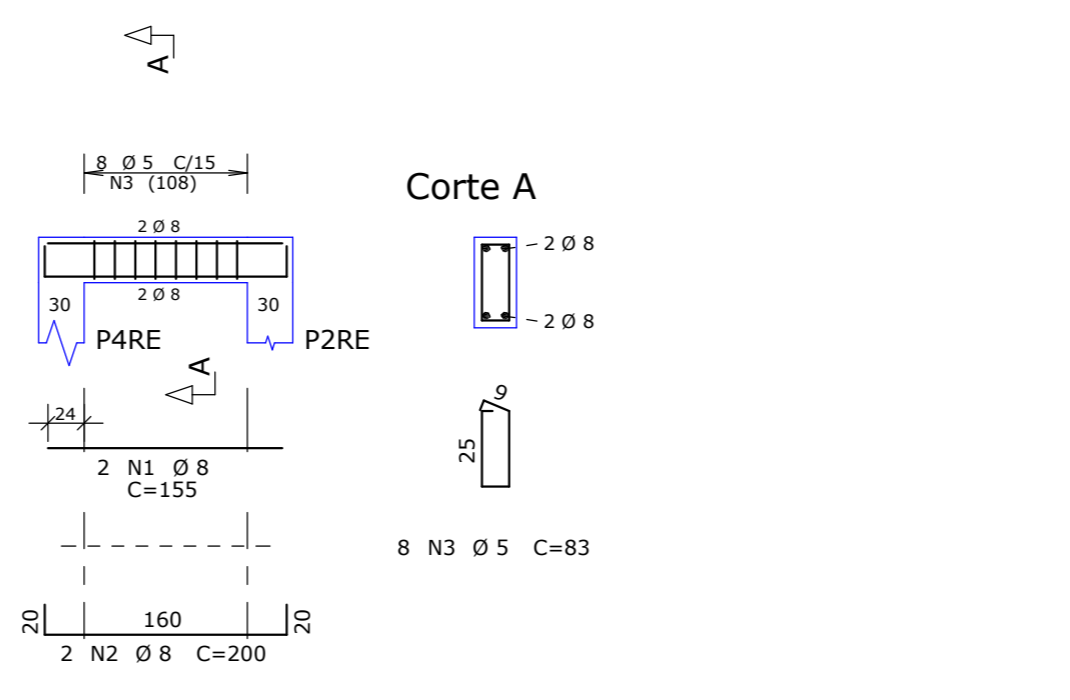
V102RE 14X50



V103RE 14X30



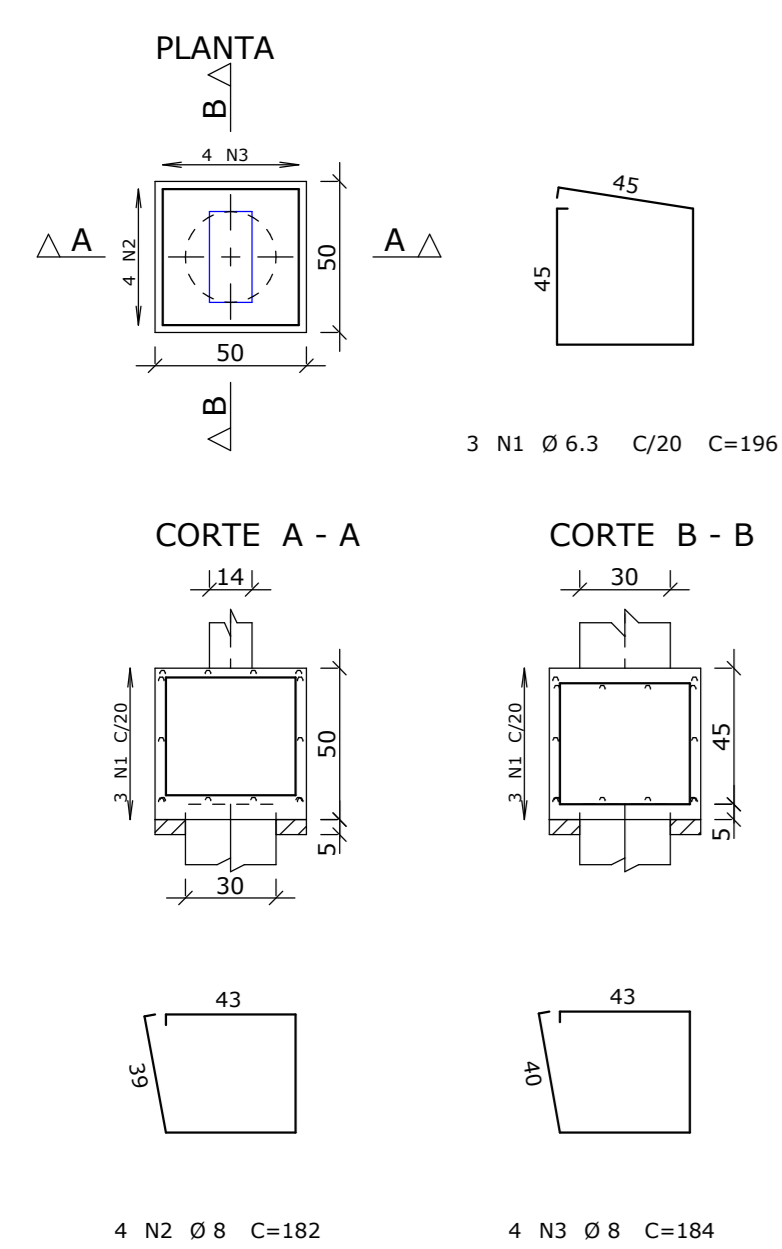
V104RE 14X30



ACO	POS	BIT	QUANT	COMPRIMENTO	UNIT	TOTAL
		mm		cm		
V101RE						
50A	1	10	2	545	1090	
50A	2	10	2	490	980	
60B	3	5	20	123	2460	
V102RE						
50A	1	10	2	545	1090	
50A	2	10	2	490	980	
60B	3	5	20	123	2460	
V103RE						
50A	1	8	2	205	410	
50A	2	8	2	200	400	
60B	3	5	8	83	664	
V104RE						
50A	1	8	2	155	310	
50A	2	8	2	200	400	
60B	3	5	8	83	664	

RESUMO DE AÇO				PESO
ACO	BIT	COMPR		
	mm	m		kgf
60B	5	62		10
50A	8	15		6
50A	10	41		26
Peso Total	60B =			10 kgf
Peso Total	50A =			32 kgf

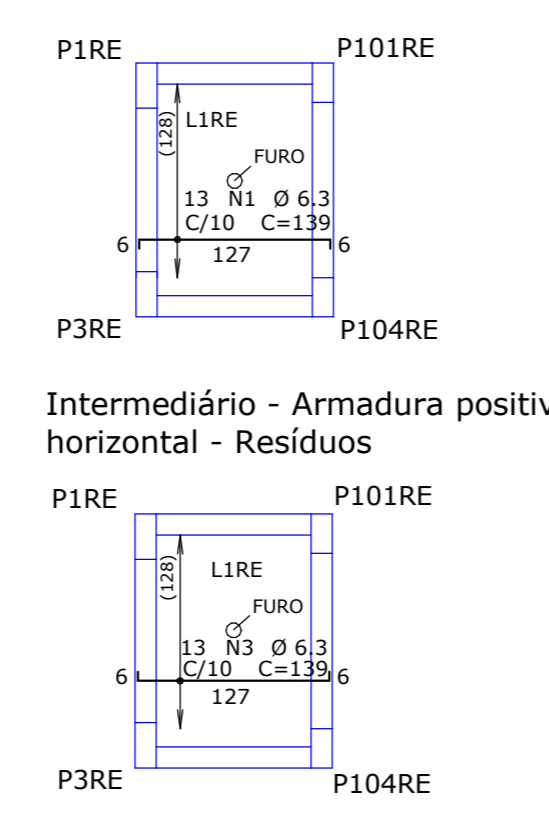
BLOCOS DOS RESÍDUOS (ESCALA 1:25) 4X



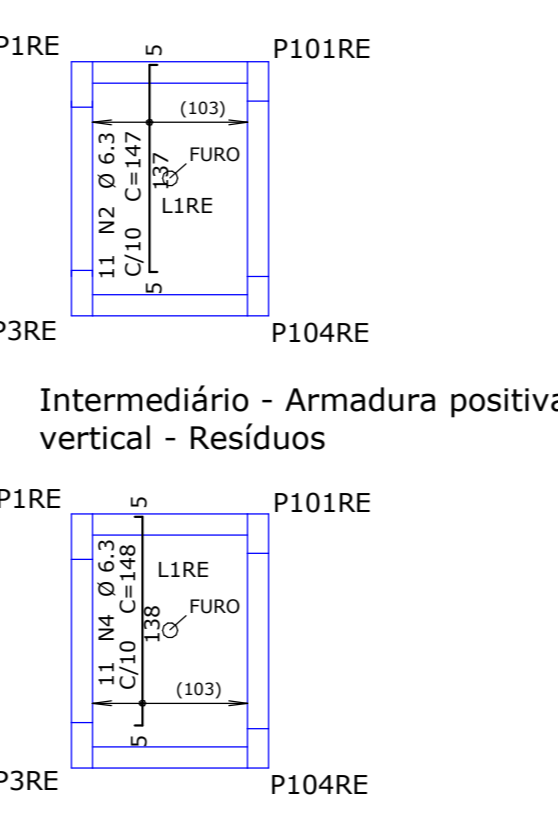
ACO	POS	BIT	QUANT	COMPRIMENTO	UNIT	TOTAL
		mm		cm		
BLOCOS DOS RESÍDUOS (X4)						
50A	1	6.3	12	196	2352	
50A	2	8	16	182	2912	
50A	3	8	16	184	2944	

RESUMO DE AÇO				PESO
ACO	BIT	COMPR		
	mm	m		kgf
50A	6.3	24		6
50A	8	39		23
Peso Total	50A =			29 kgf

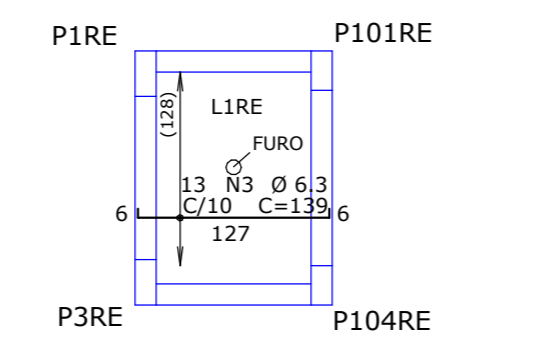
Intermediário - Armadura negativa horizontal - Resíduos



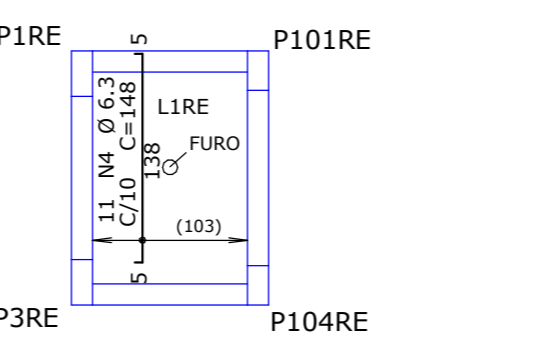
Intermediário - Armadura negativa vertical - Resíduos



Intermediário - Armadura positiva horizontal - Resíduos



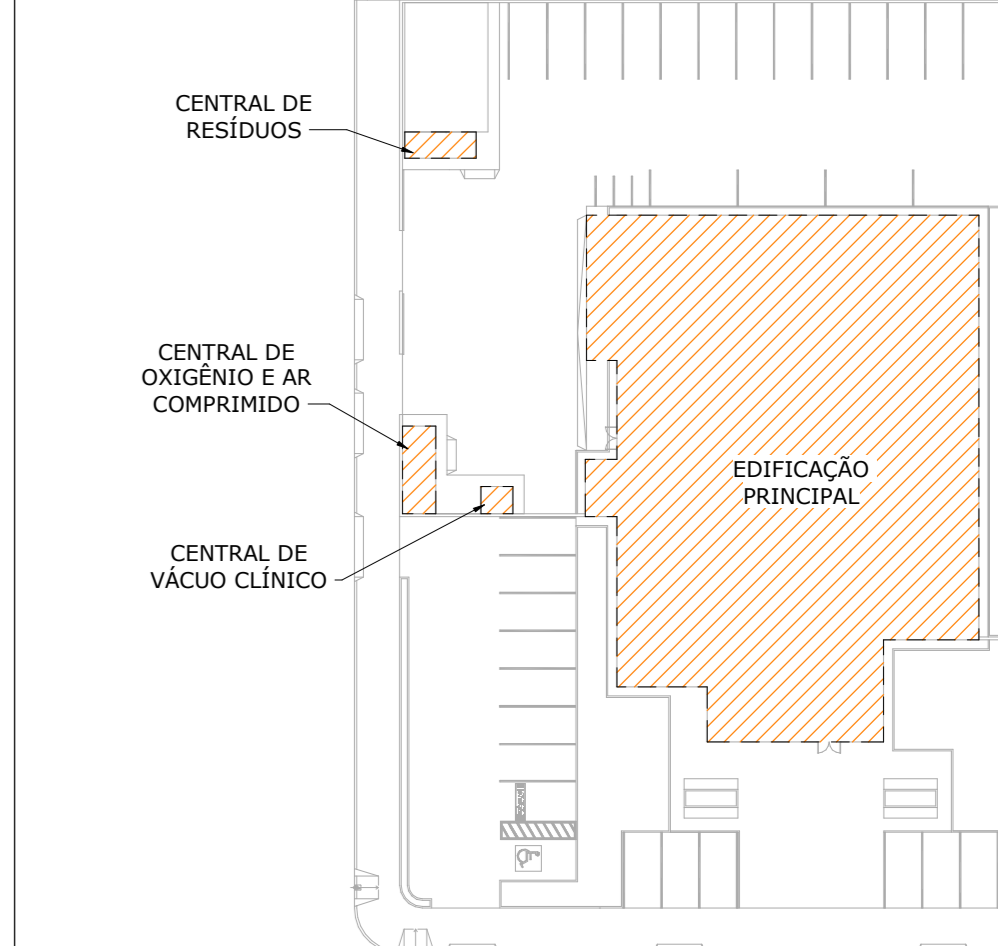
Intermediário - Armadura positiva vertical - Resíduos



ACO	POS	BIT	QUANT	COMPRIMENTO	UNIT	TOTAL
		mm		cm		
Intermediário - Resíduos						
50A	1	6.3	13	139	1807	
50A	2	6.3	11	147	1617	
50A	3	6.3	13	139	1807	
50A	4	6.3	11	148	1628	

RESUMO DE AÇO				PESO
ACO	BIT	COMPR		
	mm	m		kgf
50A	6.3	69		17
Peso Total	50A =			17 kgf

PLANTA CHAVE



ESPECIFICAÇÕES DE PROJETO

- UNIDADES EM CENTÍMETROS, NÍVEIS EM METROS, EXCETO ONDE INDICADO O CONTRÁRIO;
- ESTE PROJETO ATENDE AS ESPECIFICAÇÕES DA NORMA NBR-6118-2014;
- AS ARMADURAS DEVEM ESTAR LIMPAS, DE ACORDO COM O QUE SE ESTABELECE NAS NORMAS DE EXECUÇÃO, COM AS FERRAGENS DEVIDAMENTE POSICIONADAS CONFORME INDICA O PROJETO, UTILIZANDO-SE DE POSICIONADORES E ESPALHADORES ADEQUADOS, GARANTINDO OS COBERTIMENTOS;
- ACOS: CASO (fy ≥ 500MPa) / CASO (fy ≥ 600MPa);
- PREVER INSERTEIS METÁLICOS PARA FIXAÇÃO NA ESTRUTURA METÁLICA, NOS ELEMENTOS PERTINENTES (VER PROJETO DE ESTRUTURA METÁLICA);
- DEMAIS CONSIDERAÇÕES VIDE PLANO DE FORMAS;
- TODAS AS MEDIDAS E DIMENSÕES DEVEM SER CONFERIDAS NA OBRA.

COBRIMENTOS MÍNIMOS	
ELEMENTOS	VALORES (cm)
VIGAS E PILARES	2,5
LARES	2,0
FUNDAÇÕES	2,5

REVISÕES	
REVISÃO	DATA
01	10/03/2022
02	10/03/2022
03	10/03/2022
04	10/03/2022
05	10/03/2022

GOVERNO DO ESTADO DO PARANÁ	
SECRETARIA DA SAÚDE	SECRETARIA DA SAÚDE
SESA	SESA
SETOR DE PROJETOS	SETOR DE PROJETOS

PROPRIETÁRIO:	MUNICÍPIO:
SECRETARIA DA SAÚDE DO PARANÁ - SESA	DIVERSOS
OBRA:	ESCRITÓRIO REGIONAL:
PRONTO ATENDIMENTO MUNICIPAL - PROJETO PADRÃO	DIVERSOS
LOCAL:	TIPO:
DIVERSOS	CONSTRUÇÃO DE EDIFICAÇÃO EM